

Instructions ProntoTimer 94 / 96



Table of contents:

<u>INTRODUCTIONARY NOTE:</u>	<u>2</u>
<u>REQUIREMENTS OF HARD AND SOFTWARE:</u>	<u>2</u>
<u>INSTRUCTIONS PRONTOTIMER:</u>	<u>3-4</u>
<u>USING INSTRUCTIONS:</u>	<u>5</u>

Instructions ProntoTimer 94 / 96



Introductionary note:

Welcome to the world of ProntoTimer 94/96 where the world lies at your fingertips. Controlling and monitoring your devices in your household always seemed the stuff that good science fiction movies were made of, or a pleasure denied to those not swimming in riches. Pronto has laid the foundation to affordable technology and our scripts are designed for end-users that want out of the box and easy to use applications.


This document shows you how to install and use this timer on the pronto.

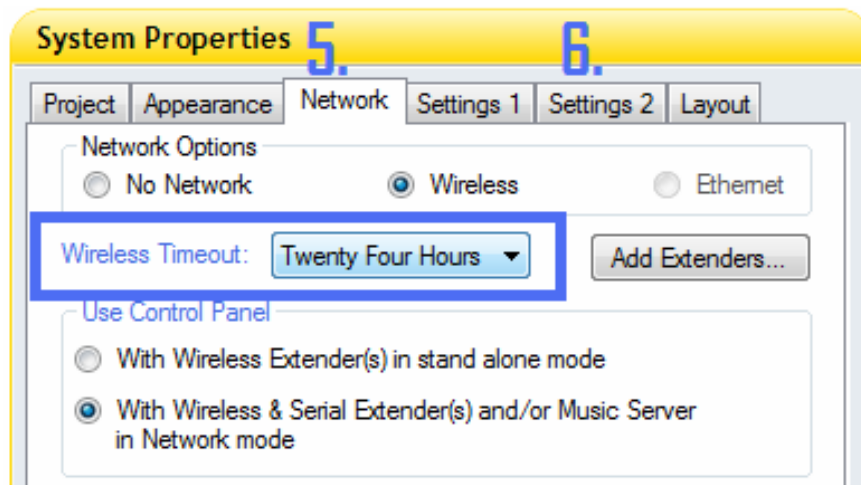
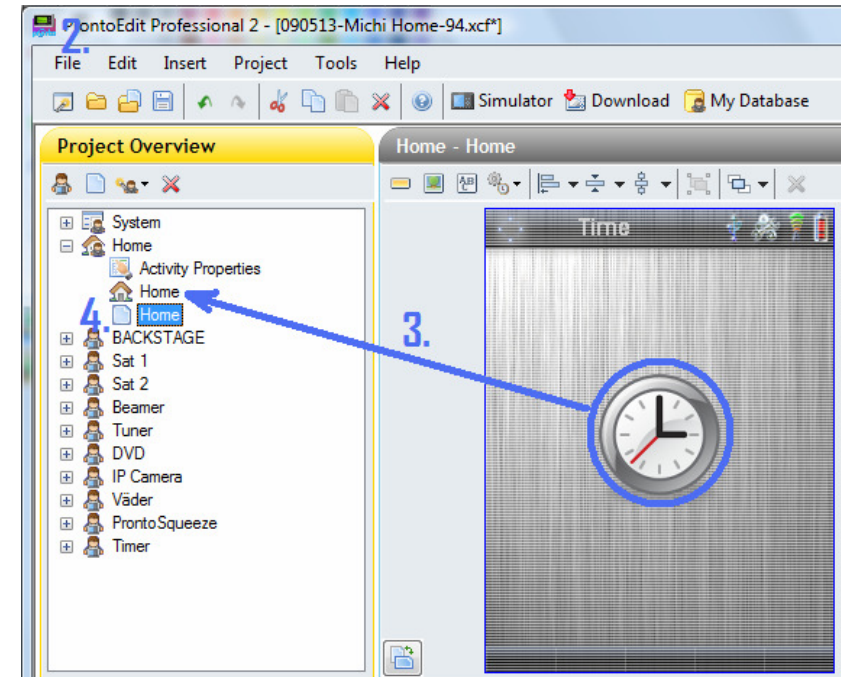
requirements of Hard / Software:

- Either Pronto TSU9600 or TSU9400 with firmware-version **6.0.21** or higher.
Important: older Firmware generates **data errors!!!!**
- ProntoEdit Professional 2
- a Wi-Fi-network
- the ProntoTimer Modul – from the website: www.rothmediatechnik.ch

Instructions ProntoTimer 94 / 96

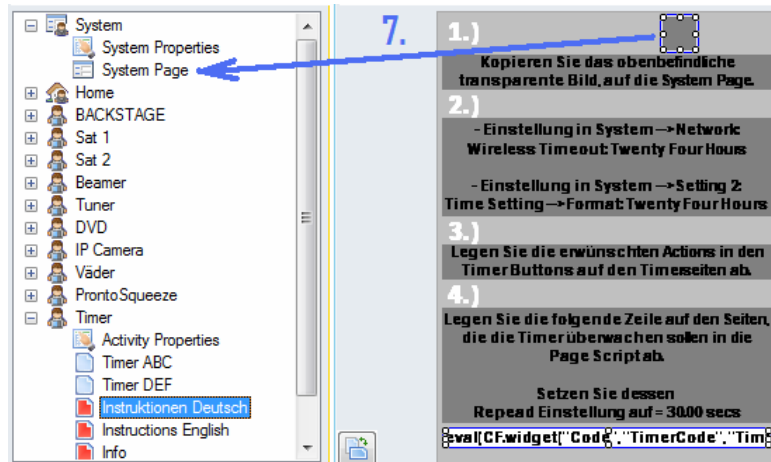
Instructions ProntoTimer:

1. Open your existing project in the ProntoEdit Professional
2. paste ProntoTimer: Menu → File → Merge Project → ProntoTimer 1.0
3. Copy the Button  from the new homepage into your own existing homepage.
4. Now delete the new homepage.

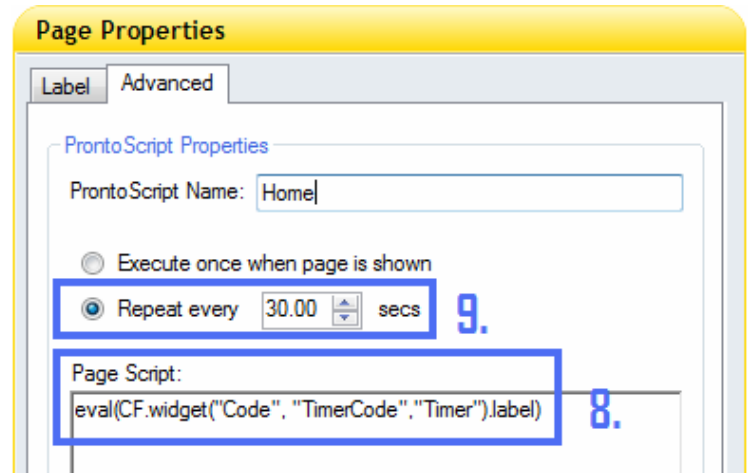


5. Adjustment in the system → Network: Wireless Timeout: Twenty Four Hours
6. Adjustment in the system → Setting 2: Time Setting → Format: Twenty Four Hours

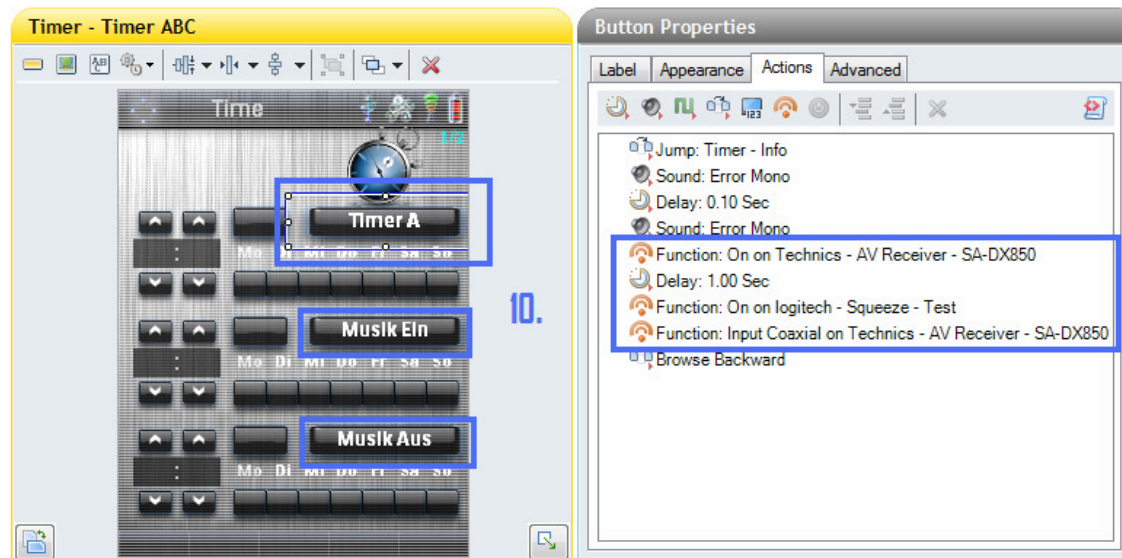
Instructions ProntoTimer 94 / 96



7. Copy the transparent image onto the system page.



8. Copy the line into all the page scripts of the pages the timers should control.
9. Put its repeat adjustment to = 30.00 secs



10. Put your desired actions into the six timer buttons timer A, timer B,... on the timerpage.
11. Give the timerbuttons names.

Instructions ProntoTimer 94 / 96

Using instructions:

1. Area to set the time when the timer should be released.
2. Button to turn the timer on or off.
on = activated / off = deactivated
3. Area to choose the days when the timer should be released.
4. Timer name and testbutton to test the activity.
5. Shows if the timer is active. This image is shown on every page the timersurveillance has been turned on.
6. Only in TSU9400: display of the current page.

